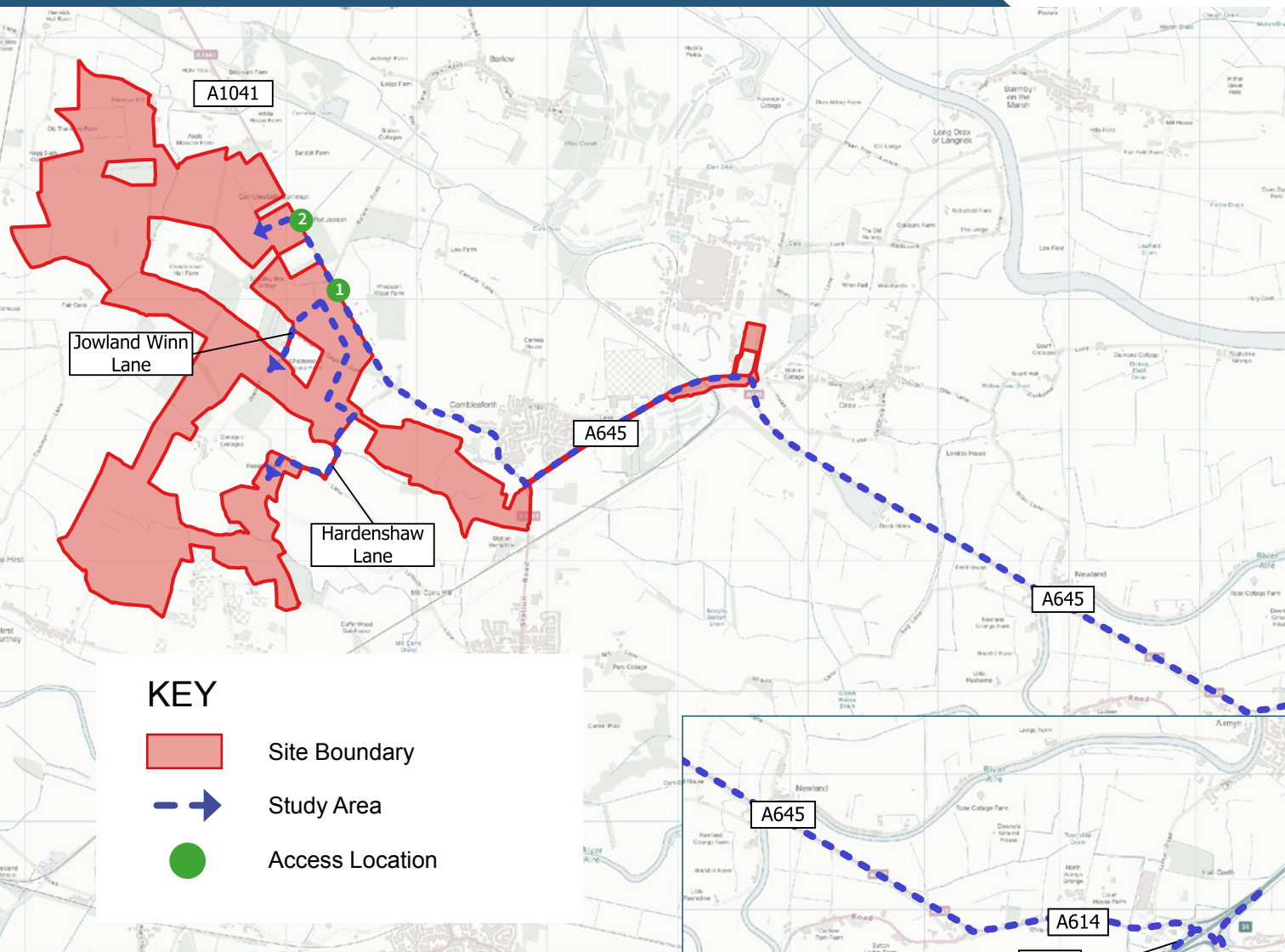


# Construction and Decommissioning



The construction of the solar farm is expected to last approximately 12 months. 200 FTE jobs will also be supported directly through construction. Deliveries to the site and shift changes will be carefully managed to reduce the number of vehicles travelling during the morning and evening peaks.

As can be seen on the above plan, the proposed construction routes approach from the south and north using Junction 36 of the M62, via the A465 and the A1041. The anticipated average number of deliveries would be 20-30 per day across the 12 month construction period. The suitability of these routes will be confirmed by detailed onsite assessment and traffic surveys and agreed with North Yorkshire Council and National Highways.

There will not be a significant amount of traffic required during the operational lifetime of the project. Solar farms generally require little maintenance (when compared to other energy generating facilities) and so traffic to the site will consist of intermittent visits from an engineer.

The site will be secured during construction with fencing and temporary lighting at the construction compounds and grid connection works. Once the solar farm is operational, lighting will be limited, and CCTV will be installed using night vision technology and remote monitoring to avoid the need for lighting at night.

## Decommissioning

The project lifetime is 40 years, meaning that we would be looking at decommissioning the site in the 2060s. As part of the decommissioning phase, all solar panels, BESS compound and other infrastructure will be removed for recycling or disposal. Whilst the exact details of the process will be agreed closer to the time, the decommissioning activity will likely mirror the construction process in duration and activity. A separate Decommissioning Traffic Management Plan (DTMP) will be developed and agreed with the Local Authority for this final phase.

